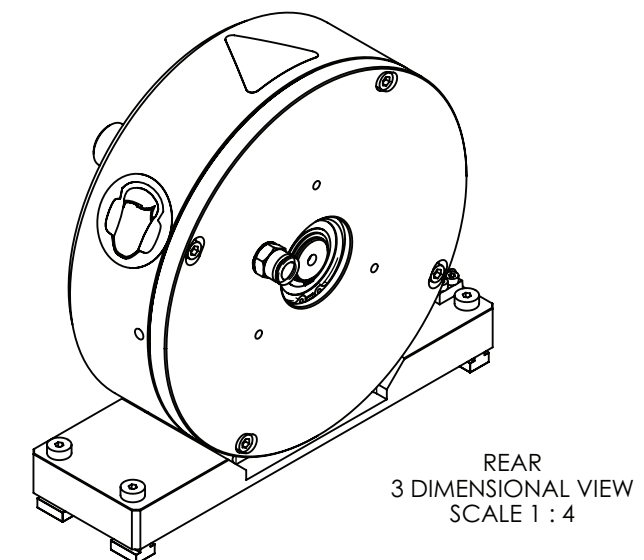
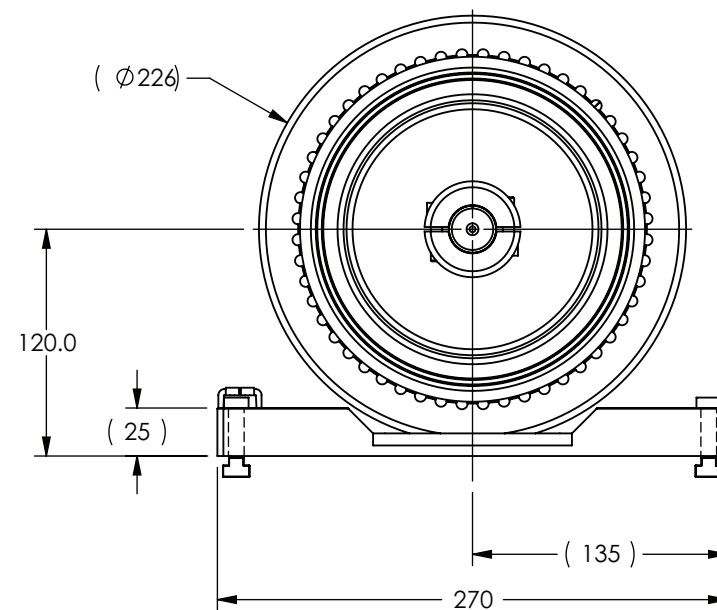
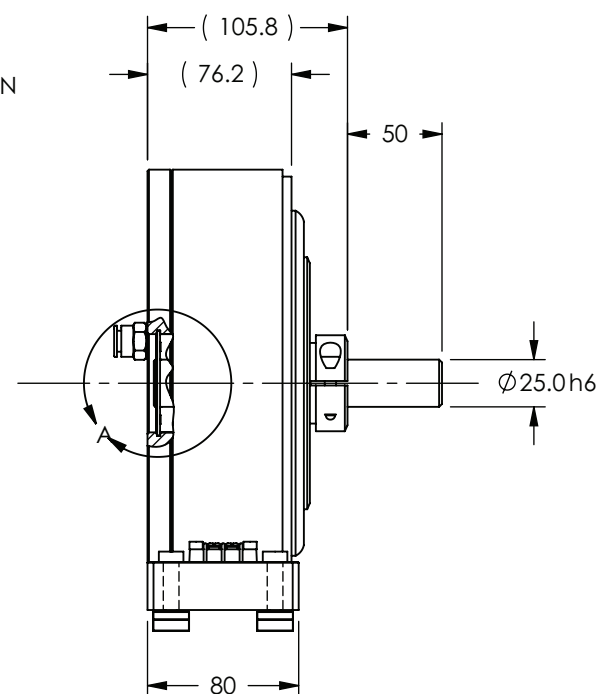
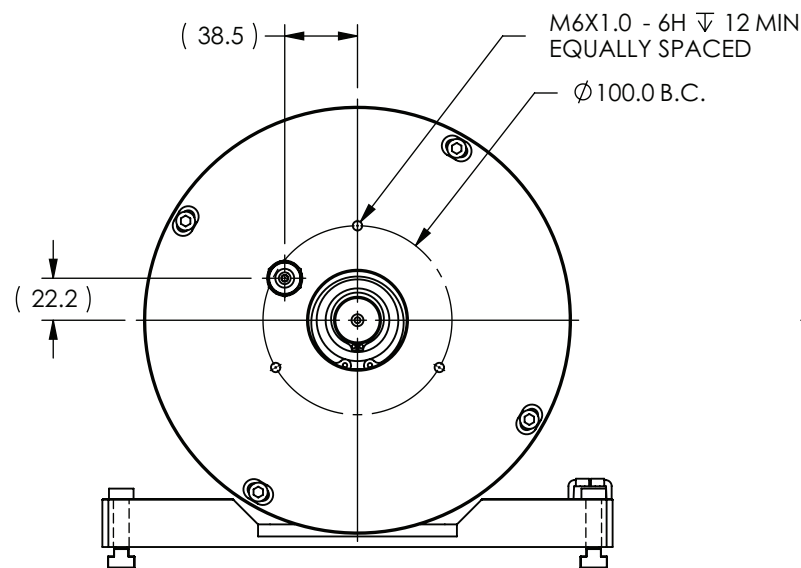
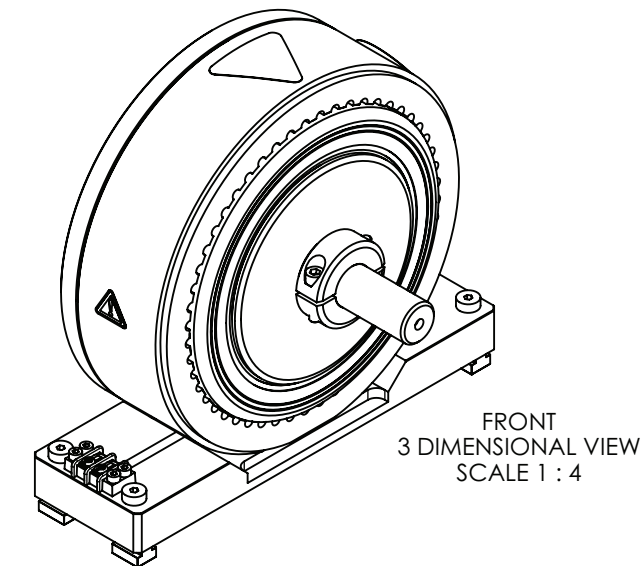
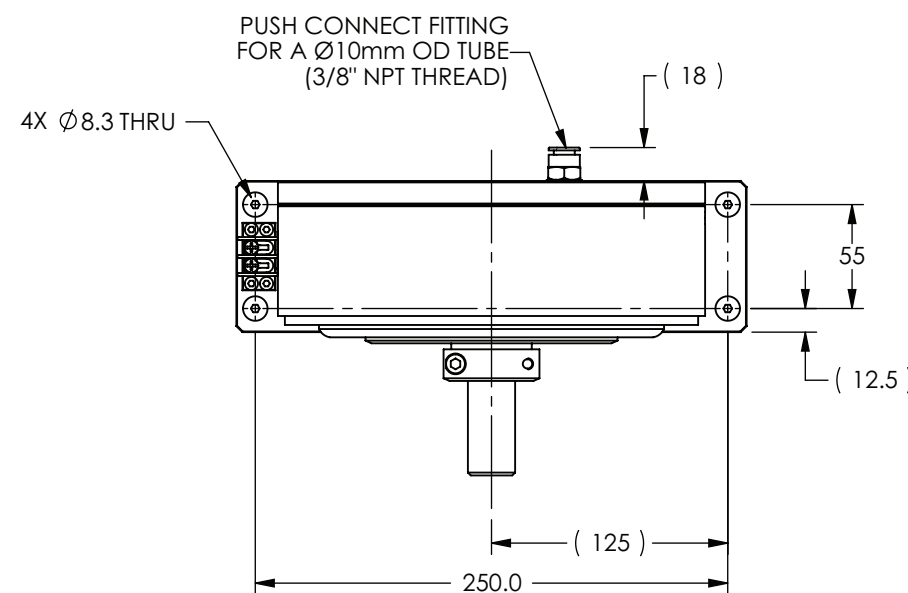
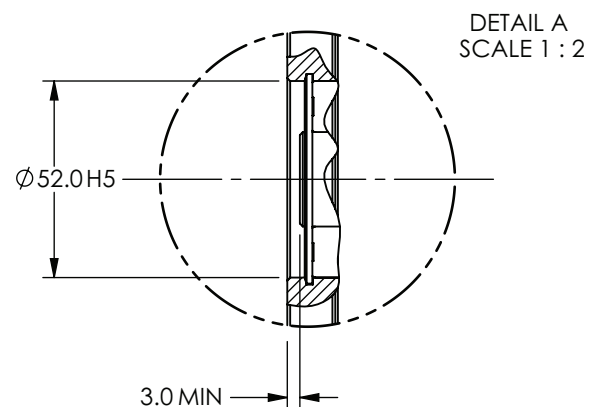


MODEL	STOCK CODE	MINIMUM TORQUE AT RATED CURRENT (Nm)	RATED CURRENT (mA)	RESISTANCE ±10% @ 25°C (ohms)	VOLTAGE (Vdc)	NOMINAL POWER (watts)	MAXIMUM SPEED (RPM)	KINETIC POWER RATINGS			DE-ENERGIZED DRAG TORQUE @ 1000 RPM (Nm)	EXTERNAL INERTIA (kg cm <sup>2</sup> )	TORQUE TO INERTIA RATIO (rad/s <sup>2</sup> )
								AIR SUPPLY* (kPa)	5 MINUTE (watts)	CONTINUOUS (watts)			
AHB-12	006249	12.0	1200	20	24	28.8	12,000	620±35	2,800	1,800	9.18 X 10 <sup>-2</sup>	5.60 X 10 <sup>1</sup>	2,140
								NO AIR	2,200	250			

**SOLID MODEL AVAILABLE**

- \* AIR SUPPLY NOTES:  
 • CUSTOMER IS TO SUPPLY CLEAN, DRY AIR.  
 • APPROXIMATE AIR CONSUMPTION IS: 567 liter/minute @ 620 kPa



TYPICAL SOUND PRESSURE AT 1 METER: 110db

WARNING: HIGH SOUND LEVELS CAN CAUSE PERMANENT HEARING LOSS. USE HEARING PROTECTION WHILE THIS PRODUCT IS IN USE.

MATERIAL: -	DESIGN	JEF	04/19/06		<b>MAGTROL INC.</b>		
	DRAWN	JEF	07/26/06		70 GARDENVILLE PKWY, W. BUFFALO, NEW YORK 14224-1322		
FINISH: -	CHECKED	AJC	06/04/08	TITLE			
	THIRD ANGLE PROJECTION			AHB-12, AIR COOLED HYSTERESIS BRAKE			
THIS DRAWING AND SPECIFICATION CONTAINS PROPRIETARY INFORMATION TO MAGTROL INC. ANY DISCLOSURE OR REPRODUCTION OF THIS DOCUMENT WITHOUT WRITTEN AUTHORIZATION FROM MAGTROL INC. IS EXPRESSLY PROHIBITED			UNLESS OTHERWISE SPECIFIED: DIMENSIONS ARE IN MILLIMETERS, DIAMETERS CONCENTRIC: 0.08 TIR, FACES PERPENDICULAR: 0.08 INTERPRETATION PER ASME Y14.5M-1994 REMOVE ALL BURRS AND BREAK SHARP EDGES 0.13/0.25 X 45°, ALL INSIDE CORNERS TO BE R 0.5 MAX. TOLERANCES: X ±0.4 X.XX ±0.13 X.X ±0.25 ANG. ±1° SURFACE FINISH 3.2 µm MAX. U.O.S.			USED ON: - SIMILAR TO: - DWG. NO. <b>AHB-12</b> REV <b>E</b>	
			SIZE <b>B</b>	SCALE <b>1:4</b>	SHEET # <b>3 OF 3</b>		